

# MARINA MANAGEMENT SYSTEM

## SEAGULL

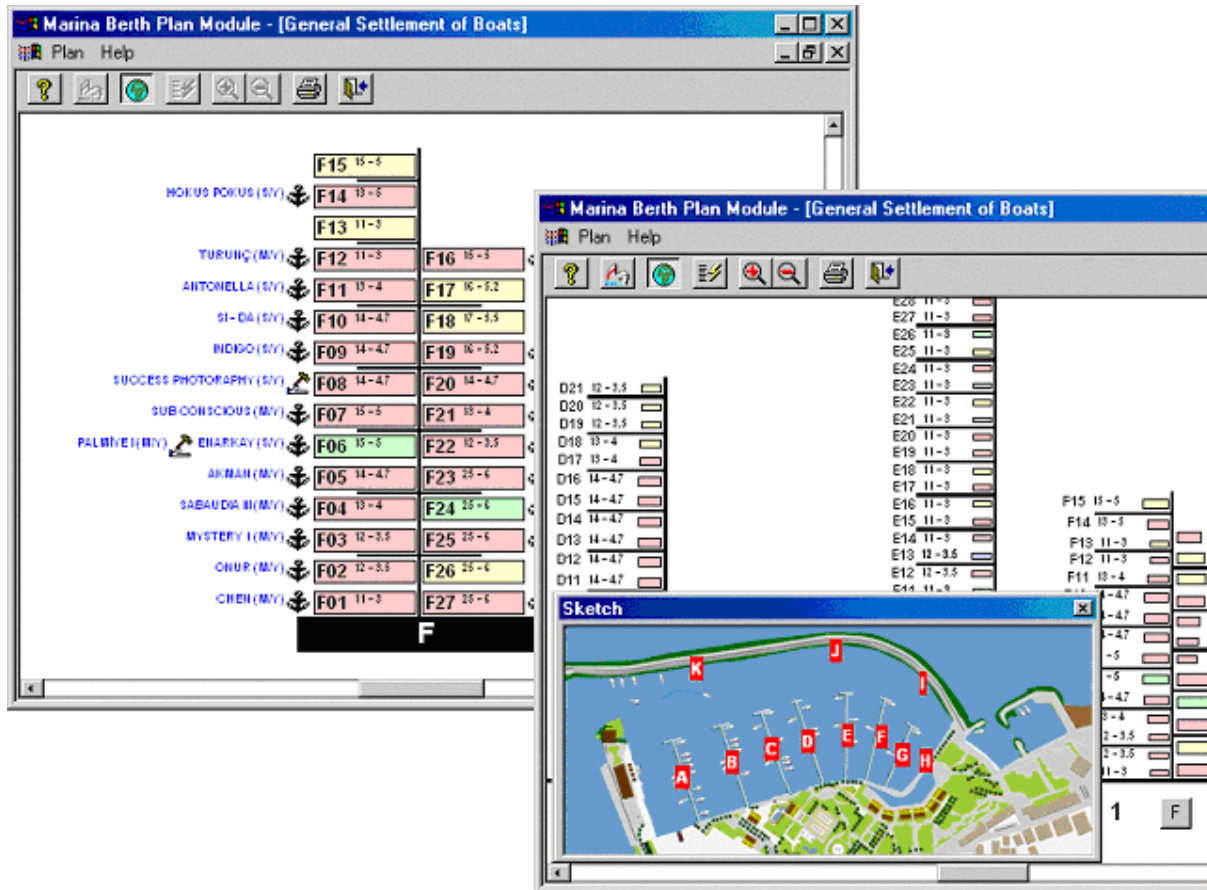
### Features and Benefits

---

- Easy to use and learn,
- Totally customizable, can be easily and modified to suit your specific needs,
- ODBC support,
- Automatically calculates mooring, slip/storage charges,
- Prints mooring/slip/storage and other services invoicing,
- Print mooring and slip/storage contracts,
- Vessel, customer memorization and tracking. Memorizes vessel name, who it belongs to, length, beam, make and other information,
- Automatically find available berths,
- Tracks several types of financial transactions,
- Print invoices with different currency, print debt and contract letters,
- Current account by vessels, print receipt, tracking payments (credit card, cash, bank transfer, etc.),
- Insurance information,
- Reservation and departure management,
- Multilingual,
- Dynamic reports definitions, print mailing labels and envelopes for selected customers,
- Users, groups, activity logs.



- Mooring Planning Module** : Organize moorings, utilizing a graphical map of the marina as defined by the user. The graphical display is maintained dynamically by your data.



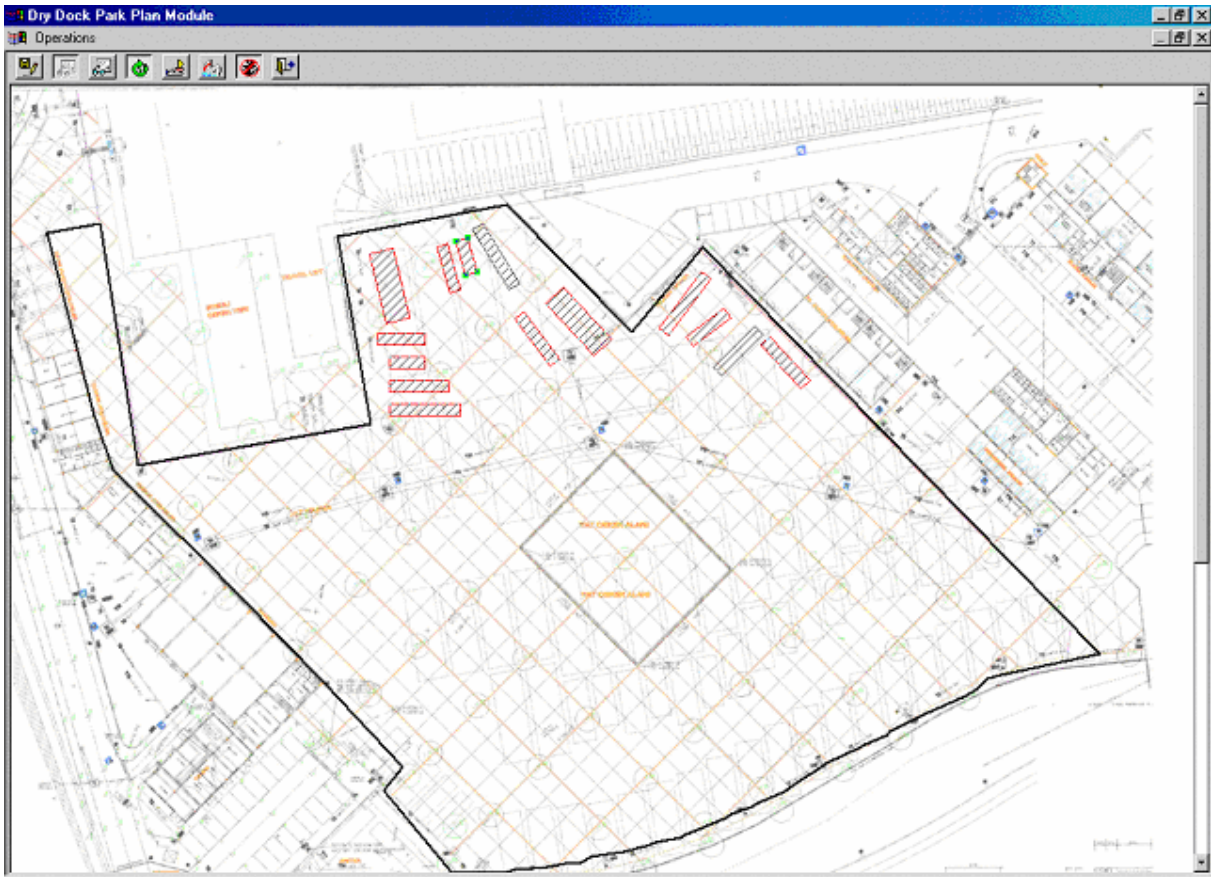
- **Technical Service Module** : Tracks technical service operations, financial transactions, invoicing, 7 levels technical service definitions,

The screenshot displays the Marina Technical Service Module interface with several overlapping windows:

- Vessel Operation Menu**: Shows a list of work orders for the vessel "ADLES TROP OF GLOUCESTER".
- Work Information (ADLES TROP OF GLOUCESTER)**: Displays details for work order 7651, including start and finish dates (31/03/2003) and work name "MECHINARY W".
- Work Command Information**: Shows work command details for 7651 / 1, including start date (31/03/2003), finish date (31/03/2003), and subcontractor "KAPAK MARIN TORNA".
- Used Equipments**: A window for tracking equipment used in the work.
- Taahhüt Cari Hesabı (POLYESTER TAŞORONU)**: A financial summary window for subcontractor "POLYESTER TAŞORONU". It shows a total debt of 41,974 EURO and a balance of 27,604,734.649 TL. It includes a table of transactions:

Date	Fat/Mak No	Açıklama	Debit	Credit	emanda	TL Karşılığı
12/09/2002	1875	MINDWARD 2 teknesi 6607/1 nolu IE malzeme (Polyeste	43	0	40,259	69,478,341
20/09/2002	2106	GVI teknesi 6639/1 nolu IE hakediş	210	0	40,469	338,499,840
20/09/2002	2106	GVI teknesi 6639/1 nolu IE malzeme (Polyester malzeme)	295	0	40,767	480,347,392

**Dry Dock Planning Module** : Organize storage ashore, utilizing a graphical map of the marina as defined by the user. The graphical display is maintained dynamically by your data.



- **Ship's Store Module** : Full Point-of-Sale Cash Register to be used by your ship store, sales department, or service department. Easily settle normal purchase transactions as well as Charges to Account by vessels.

**Marina Market Modülü (MARKET)**  
Kayıtlar Kasa Bilgileri Raporlar Yardım

**Ürünler (1)**

Kodu: 0000001 Fır.Ürün Kodu:

Adı: WHITE PAINT

Kısa Adı: WHITE PAINT

Barkod: 089733737 ?

Ürün Grup Adı:

Birimi:

Satış Birimi:

Birim Eş Değeri:

Kar Oranı %:  0 ?

Satış Fiyatı: 4500000

Komisyon %:

Para Birimi:

**Kasa Bilgileri (SATIŞ İŞLEMİ)**

F5 - Yeni Satış F6 - Yeni Satır F7 - Satır Düzen F9 - Yazdır F11 - Satır İptal F12 - Satış İptal ESC - Çıkış

Satış Bilgileri

Komisyon %: 0 İskonto %: 0

Nereden:

Nereye:

Açıklama:

Fatura No:   Nakit  K.Kartı

Tekne Adı / İş Emri Nosu:  AMBER WITCH

Satış Noktası: MARKET 13/05/2003

**23,000.-**  
**TOPLAM SATIŞ**

Barkod Numarası / Ürün Adı: 089733737

Gün Bekletme:   Müşteri Bekletme:

Fatura Tipi:  Fiş  Fatura  Firma lade  Transfer  Ambar lade  Firmadan Giriş  Müşteri lade  Kredi Satış

Barkod Numarası	Ürün Adı	Komisyon	İskonto	KDV	Miktar	Satış Fiyatı	Satır Toplamı
1 089733737	WHITE PAINT			0	1.000	23.000	23.000

- **Security Module** : Crew, passenger, guest and vehicle inspections, black list entry and warnings.

**Marina Güvenlik Modülü**

Tarih: 13/05/2003 Görevliler: ALİ ÖZCAN; HÜSEYİN YILMAN; SAFFET GÜNAYDIN; SONER KARAKÜÇÜK;

No: 1 Ekle --->

Vardiya Notları

Misafir Girişi (F3) Misafir Değiştir (F4)

Giriş Saati	Plaka	Adı Soyadı	Giriş Nedeni	Tekne Adı	Kimlik Tür/No	Açık.	Çıkış Saati	Giriş Tarihi
17:24		MELİH ÖZGÜRÜN			/			13/05
17:34	34 APK 45	ZEKİ ÖZTÜRK			/			13/05
16:56		MEHMET OKUR			/			13/05
12:45	34 MNS 45	YÜKSEL AK			/			13/05
11:42		AHMET AKYOL			/			13/05
10:10		JALE KALE			/		17:47	13/05
12:30		HİDAYET USTA			/			13/05
12:34		ALİ KAYA			/			13/05
14:25		MEHMET EMİN			/			13/05
16:46		ERKAN İNAN			/			13/05
9:30		CAN ÜNVER			/			13/05
10:21		BURAK EMRİ			/		17:47	13/05
11:08		ŞENER ÖZKAN			/			13/05

## Reference

Setur Antalya Marina TÜRKİYE  
 Park Kemer Marina TÜRKİYE  
 Port Göcek TÜRKİYE  
 Ataköy Marina TÜRKİYE  
 Turgutreis Marina TÜRKİYE  
 Setur Finike Marina TÜRKİYE  
 Setur Ayvalık Marina TÜRKİYE  
 Setur Kuşadası Marina TÜRKİYE  
 Setur Çeşme Marina TÜRKİYE  
 Setur Karacasöğüt Marina TÜRKİYE  
 Setur Kalamış Marina TÜRKİYE  
 D-Marin Turgutreis TÜRKİYE

## System Requirements

Server: NT/UNIX Server; TCP/IP connection; RDBMS; min 128 MB RAM; min 1 GB disk space

Client: Win9x/W2000/XP; 64 MB RAM, min 10 MB disk space